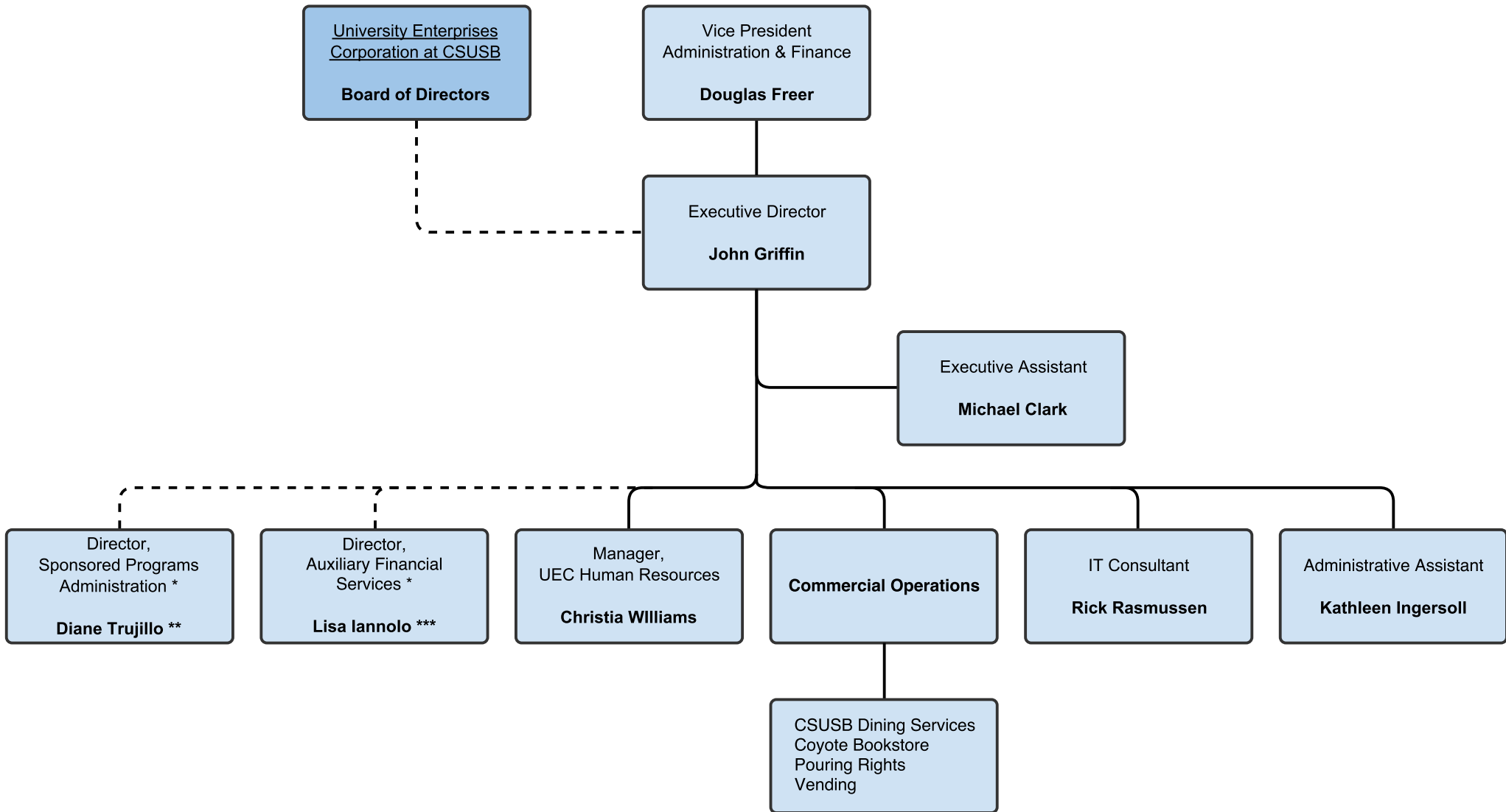


**University Enterprises Corporation
Organizational Chart
January 26, 2017**

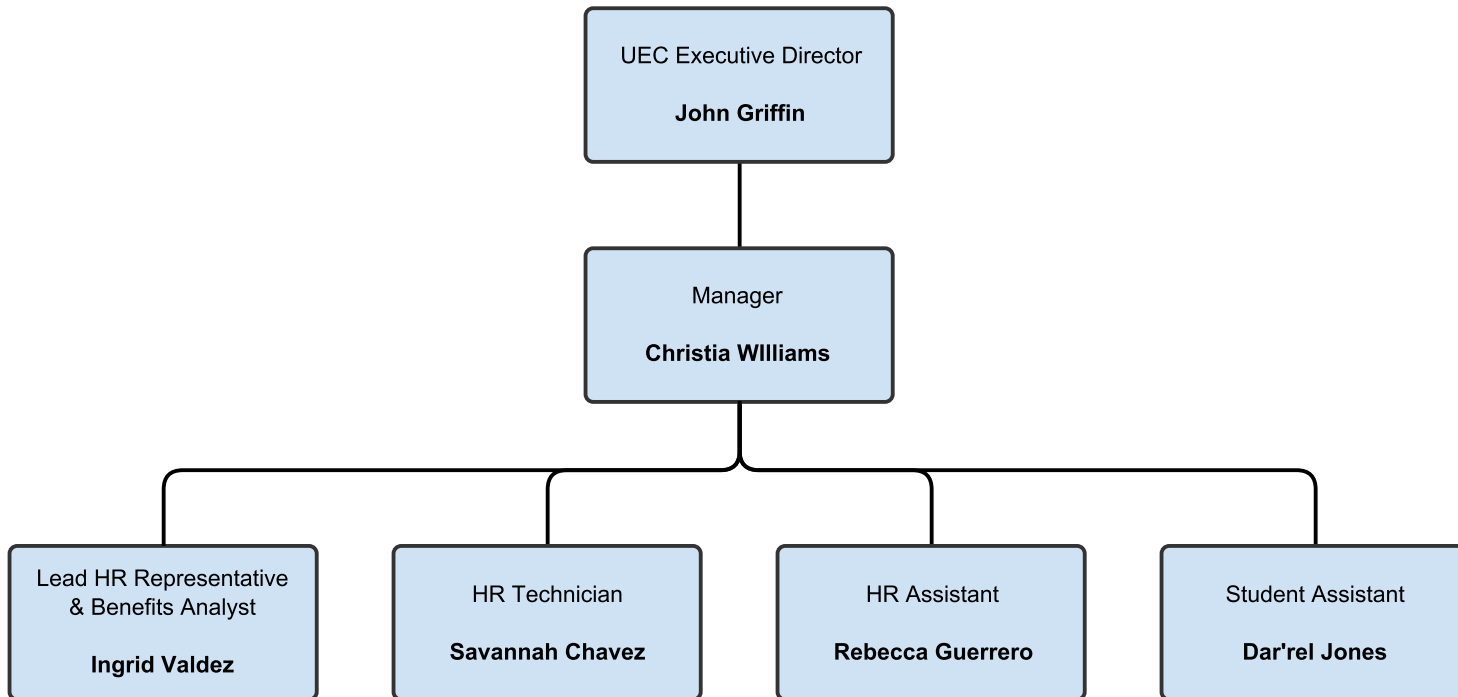


* Currently provides services to UEC under MOU with campus.

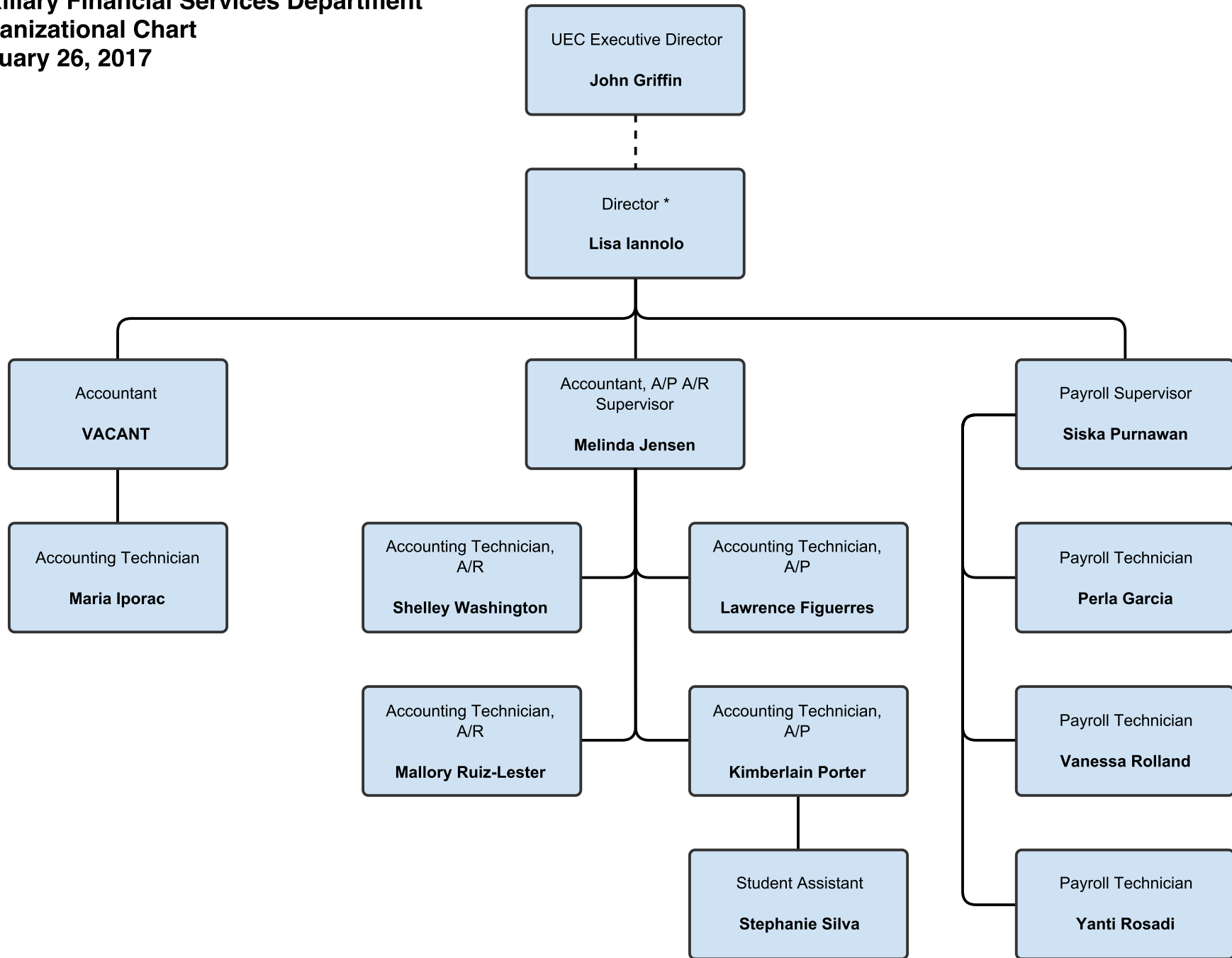
** Reports to Associate Provost for Academic Research.

*** Reports to AVP of Finance & Administrative Services.

**University Enterprises Corporation
Human Resources Department
Organizational Chart
January 26, 2017**

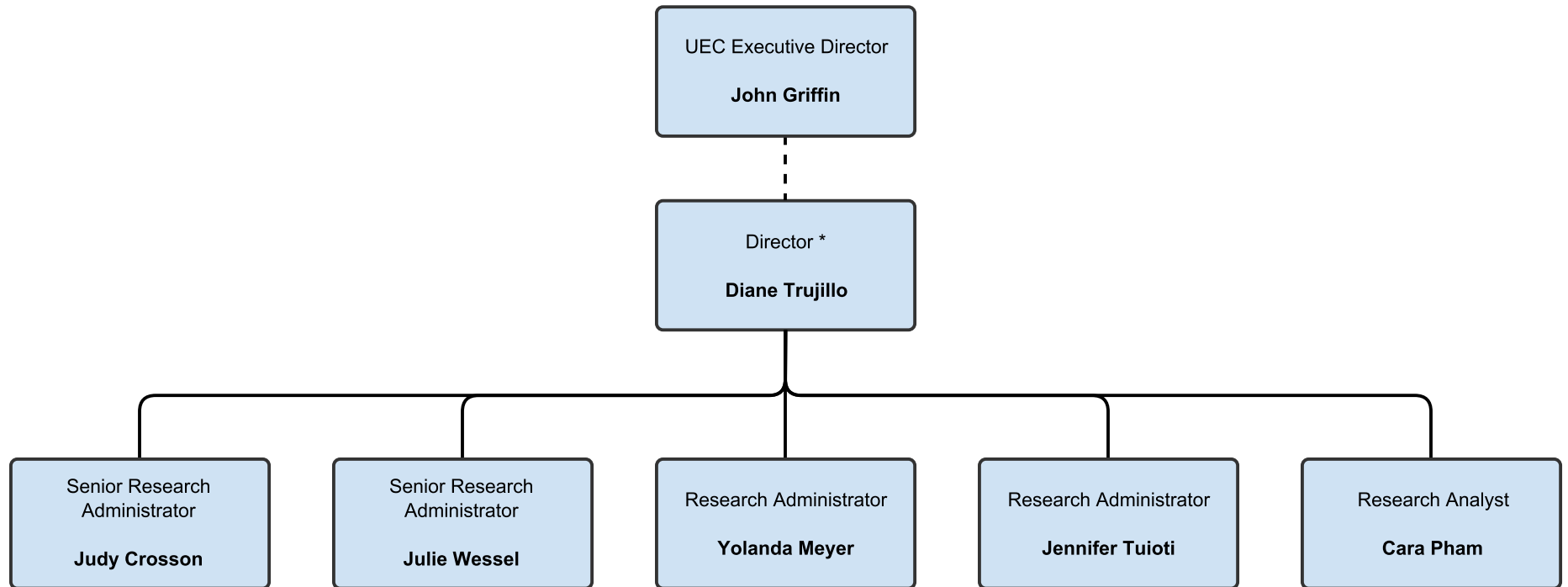


**University Enterprises Corporation
 Auxiliary Financial Services Department
 Organizational Chart
 January 26, 2017**



* Currently Provides service to UEC under MOU with campus.
 Reports to AVP of Finance & Administrative Services.

**University Enterprises Corporation
Sponsored Programs Department
Organizational Chart
January 26, 2017**



* Currently Provides service to UEC under MOU with campus.
Reports to Associate Provost for Academic Research.